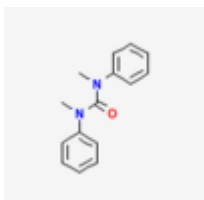


Methyl centralite

Trade Name: Methyl centralite
 Chemical Name: 1,3-Dimethyl-1,3-diphenylurea
 CAS: 611-92-7
 EC: 210-283-4
 Synonyms: N,N'-Dimethylcarbanilide|Centralite II|N,N'-Dimethyl-N,N'-diphenylurea
 Molecular Formula: $C_{15}H_{16}N_2O$
 Structural Formula:



Molecular Weight: 241.65
 Characteristics: white to yellowish fine crystals, odourless

Quality values

Point of crystallization	120,5 - 122,0 °C
Visual appearance	white, crystalline powder
Melting appearance	clear liquid, free of foam and machanic impurities
Particle Size 1,4 mm	100 percent of the material shall pass throught U.S. standard No. 50 (297 micron)
Hydrolyzable chlorine compounds	No indication of the presence of hydrolysable chlorine compounds
Acidity (as acetic acid)	max. 0,006 %
Amines (as methylaniline)	max. 0,20 %
Ash	max. 0,1 %
Volatile substances	max. 0,20 %

Storage

Store in original tightly closed containers in a dry, cool and well-ventilated area.
 Protect from direct weather conditions.